



MONTHLY MEMBERSHIP PROGRESS REPORT

District 49 B

Results as of: 06/30/2019

GMT: HOWARD HUDSON

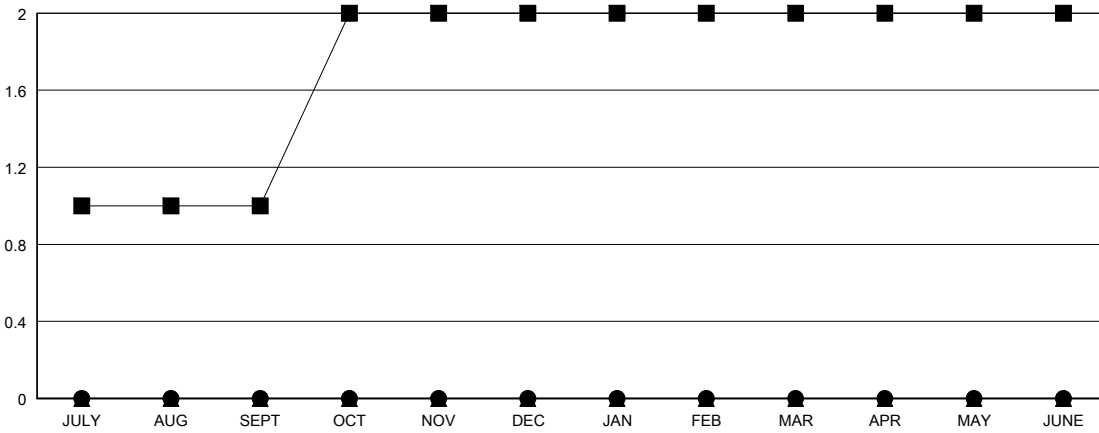
LOCATION ALASKA

GMT CA

Clubs			
RESULTS FOR 2018-2019			
QUARTER	NEW CLUB GOAL	NEW CLUBS	DROPPED CLUBS
JULY/AUG/SEPT	1	0	0
OCT/NOV/DEC	1	0	0
JAN/FEB/MAR	0	0	1
APR/MAY/JUNE	0	0	0

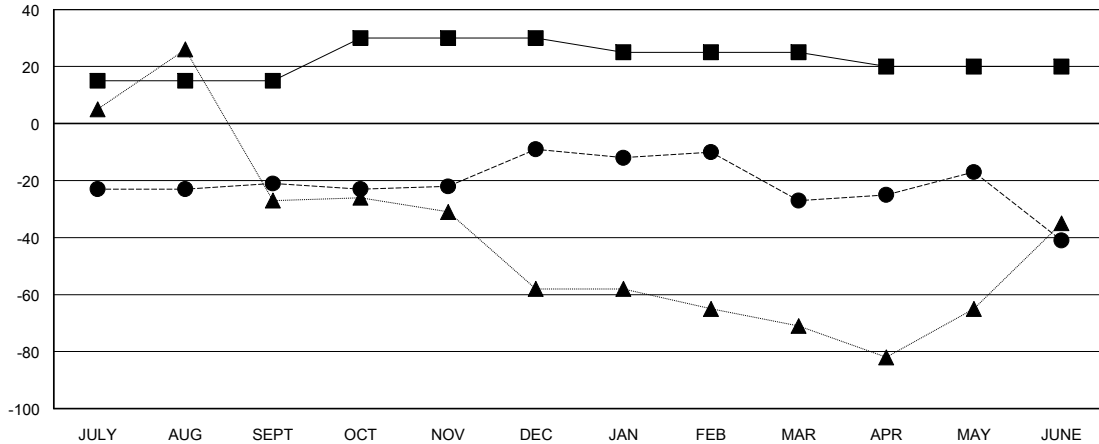
Members			
RESULTS FOR 2018-2019			
QUARTER	MEMBER GROWTH NET GOAL	MEMBER GROWTH ACTUAL	DROPPED MEMBERS ACTUAL (including transfers)
JULY/AUG/SEPT	15	26	45
OCT/NOV/DEC	15	34	20
JAN/FEB/MAR	-5	17	35
APR/MAY/JUNE	-5	38	51

GOALS AND ACTUAL NEW CLUBS CUMULATIVE



- - CURRENT YEAR GOALS FOR NEW CLUBS
- - CURRENT YEAR ACTUAL NEW CLUBS
- ▲ - LAST YEAR ACTUAL NEW CLUBS

GOALS AND ACTUAL MEMBERS CUMULATIVE



- - MEMBER GROWTH NET GOAL
- - MEMBER GROWTH ACTUAL
- ▲ - LAST YEAR MEMBERSHIP ACTUAL

DROPPED CLUBS: 1

19 CLUBS OF 28 ADDED 1 OR MORE NEW MEMBERS

GENDER DISTRIBUTION	
MALE	468 (59.47%)
FEMALE	319 (40.53%)
Women Percentage Fiscal Year Goal: 50%	

DROPPED MEMBERS	
DECEASED	9
CLUB CANCELLED	11
OTHER	131
TOTAL	151

[CLICK HERE FOR CUMULATIVE MEMBERSHIP DATA](#)

TOTAL FAMILY UNIT MEMBERS	200
FAMILY MEMBERS PAYING HALF DUES	102